



FOX CITIES CHAPTER May Meeting

- DATE:** Tuesday, May 15, 2012
- LOCATION:** Kimberly-Clark
Neenah, WI (see next page for directions)
- TIMES:** 5:00 – 5:30 – Networking – Please feel free to bring a guest!
5:30 – 6:00 – Dinner
6:00 – 7:00 – Presentation – Laura K. Lenhart, CPA
“Live Your Life On Purpose”
7:00 – 7:30 – Business Meeting
- FOOD:** We’ll be ordering from Debe Cheesecakes and Catering.
Please choose one: Roast Turkey, Roast Beef, or Hickory Smoked Ham
Please choose one: Chocolate Chip Cookie, Brownie, or Vanilla Bean Cheesecake.
Drinks are included.
- Cost:** Fox Cities Chapter Members - **\$10.00**
All others in attendance - **\$11.00**
- TOPIC:** **Live Your Life On Purpose**

Whether you’re trying to advance your career or achieve something significant in your personal life, at some stage you will need to set goals and make progress toward achieving them. But just being able to set a goal is not enough. Promising yourself that you’ll do something is easy, actually doing it **is** a lot harder.

Learn how to capture a vision for your future, how to concentrate your efforts and how to walk into your future with confidence and clarity.

Laura K. Lenhart, CPA - Laura serves as the vice president of finance and operations for the Fox Cities Performing Arts Center located in Appleton WI. As a member of the executive team reporting to the executive vice president she oversees finance, HR, IT, event management, front of house, theatrical productions and physical plant operations. Laura is also an instructor for the Art Administration Masters program at Drexel University. Laura serves on the CFO Arts consortium, Women’s Fund and road labor subcommittee of the Broadway League.

(One recertification point has been submitted.)

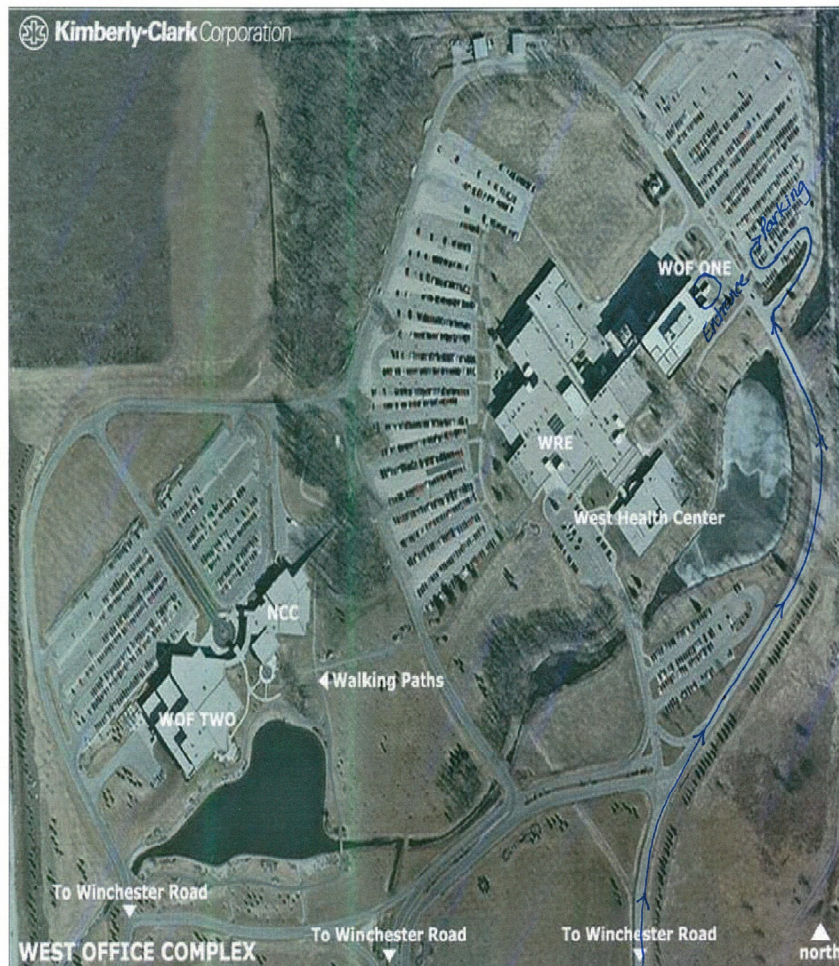
Please **RSVP** with the # attending (you are welcome to bring a guest)
and your sandwich and dessert choice
to **Kathy Mason**
by NOON on Thursday, May 10, 2012
Call 920-721-6473 or kmason@kcc.com

NOTE: It is the policy of the Fox Cities Chapter that members or guests who fail to cancel dinner reservations before 10:00 A.M. on Tuesday, February 21 will be billed for that dinner.

DIRECTIONS TO KIMBERLY-CLARK

A campus map is below and specific directions to K-C are as follows:

Take Highway 41 to Winchester Road/County Road II. Travel west on Winchester Road/County Road II for approximately 1-1/2 miles where you will see the entrance to the Kimberly-Clark campus. There is a traffic light at the campus entrance. Turn right into the campus and follow the road around to the right for approximately 1/2 mile where you will see a large parking lot (follow the signs for West Office One). You may park anywhere in the lot except in the "reserved" parking. You may also park in the guest parking spaces.



Winchester Road / County Road II